

# Glendale Presbyterian Church

March 17, 2024 | 10 AM  
Fifth Sunday of Lent



## Gather

Welcome & Announcements | Rev. Kathleen Henrion

Prelude | Hallelujah, Leonard Cohen | Carol Schmidt

Introit | GTG #413 | Come into God's Presence

\*Call to Worship | Liturgist

One: This is the day God has promised: the day of the new covenant.

**All: We are here, because our hearts are filled with love for our God.**

One: No longer carved on cold stone, this covenant is engraved on our hearts.

**All: Our hearts are open so God's Word can shape us.**

One: We will reach out to our neighbors, our friends and family, even to strangers.

**All: Our hearts are ready to serve God and all of God's people.**

\*Hymn | Congregational Choice

Call to Confession | Liturgist

Prayer of Confession

**O Heart which seeks our own: we yearn for your presence in our lives, yet turn away from you time and again. We want to serve others, but become obsessed with our own desires. We need your Word to fill our emptiness, yet let it be silenced by the noise of our world. Our hearts are clogged with the foolishness of our lives, and often struggle to beat in rhythm with your own. In this silence, and in the depths of our hidden souls, come to us and make us whole, Steadfast Love. Write *grace* upon our hearts, so we might be more forgiving people; write *mercy* on our hearts, so we might become more welcoming people; write *hospitality* upon our hearts that we might become more like Jesus Christ, our Lord and Savior, who came for all people, even us. Amen.**

Assurance of Forgiveness

One: A new heart, a generous spirit, a fresh start:

these are the gifts our God gives to us.

**All: Through Christ, we are cleansed; through Christ, we are healed; through Christ, we become new people. Thanks be to God. Amen.**

\*Passing of the Peace

One: The peace of Christ be with you.

**All: And also with you.**

Anthem | You are Mine, Words and Music by David Haas, Arr. Mark Hayes | Chancel Choir

## Proclaim God's Word

Prayer for Illumination | Liturgist

+Moment for Wonder | Rev. Kathleen Henrion: "It's You I Like", Mister Rogers

Reformed worship is centered around the Word, both the Word of scripture and Christ as the Word Incarnate.

In worship we gather around the Word, engage with the Word, and respond to the Word.

**Bold text is read by the congregation.**

\*Please rise in body or in spirit.

You may access the online order of worship to follow along on any digital device:



In the presence of a holy God, we become aware of the ways we fall short of God's best hopes for us, and the ways we have hurt others. We turn to God in prayer, asking for forgiveness.

Passing of the Peace is one of the most ancient responses in worship. We invite you to share a sign of peace with your neighbor.

Following "Moment for Wonder" children are invited to join our Sunday School Teacher in the back of the sanctuary to go to Sunday School downstairs.

# Come into God's Presence 413



- 1 Come in - to God's pres-ence sing - ing "Al - le - lu - ia,
- 2 Come in - to God's pres-ence sing - ing "Je - sus is Lord,
- 3 Praise the Lord to - geth - er sing - ing "Wor - thy the Lamb,
- 4 Praise the Lord to - geth - er sing - ing "Glo - ry to God,



- |                     |                      |
|---------------------|----------------------|
| al - le - lu - ia,  | al - le - lu - ia."  |
| Je - sus is Lord,   | Je - sus is Lord."   |
| wor - thy the Lamb, | wor - thy the Lamb." |
| glo - ry to God,    | glo - ry to God."    |

*\*May be sung as a canon.*

This anonymous worship chorus is thought to have been created extemporaneously during the 1960s and was one of the earliest songs of that kind. The opening line of the text is a paraphrase of Psalm 100:2, and the very act of singing this song fulfills that verse's invitation.

Hymn | GTG #303, verses 2 (\*leaders) and 4 | God the Spirit, Guide and Guardian

Scripture | Matthew 28:16-20 and Acts 10:36-38

Sermon | "Who Do You Say I Am?: Jesus as Presence" | Rev. Kathleen Henrion

## Respond to God's Word

\*Hymn | GTG #450 | Be Thou My Vision

\*Affirmation of Faith | From the Heidelberg Catechism

One: Isn't Christ with us until the end of the world as he promised us?

**All: Christ is true human and true God. In his human nature Christ is not now on earth; but in his divinity, majesty, grace, and Spirit he is never absent from us.**

One: If his humanity is not present wherever his divinity is, then aren't the two natures of Christ separated from each other?

**All: Certainly not. Since divinity is not limited and is present everywhere, it is evident that Christ's divinity is surely beyond the bounds of the humanity that has been taken on, but at the same time his divinity is in and remains personally united to his humanity.**

Words of Offering | Liturgist

Minute for Mission | One Great Hour of Sharing | Peggy Mayfield

Prayer of Dedication | Rev. Kathleen Henrion

\*Doxology | GTG #582 | Glory to God, Whose Goodness Shines on Me

Prayers of the People | Rev. Kathleen Henrion

Lord's Prayer

**Our Father, who art in heaven, hallowed be thy name. Thy kingdom come. Thy will be done on earth as it is in heaven. Give us this day our daily bread. And forgive us our debts as we forgive our debtors. And lead us not into temptation. But deliver us from evil. For Thine is the Kingdom, and the power and the glory forever. Amen.**

\*Hymn | GTG #543 | God, Be the Love to Search and Keep Me

\*Blessing and Benediction | Rev. Kathleen Henrion

Postlude | Danse caracteristique, Vladimir Rebikov | Carol Schmidt

*Some Liturgies come from Thom M. Shuman's Lectionary Liturgies:  
<http://lectionaryliturgies.blogspot.com/>*

The Heidelberg Catechism was completed in 1562 by early Protestant Reformers Zacharias Ursinus and Kaspar Olevianus. The catechism is structured as a series of questions and answers.

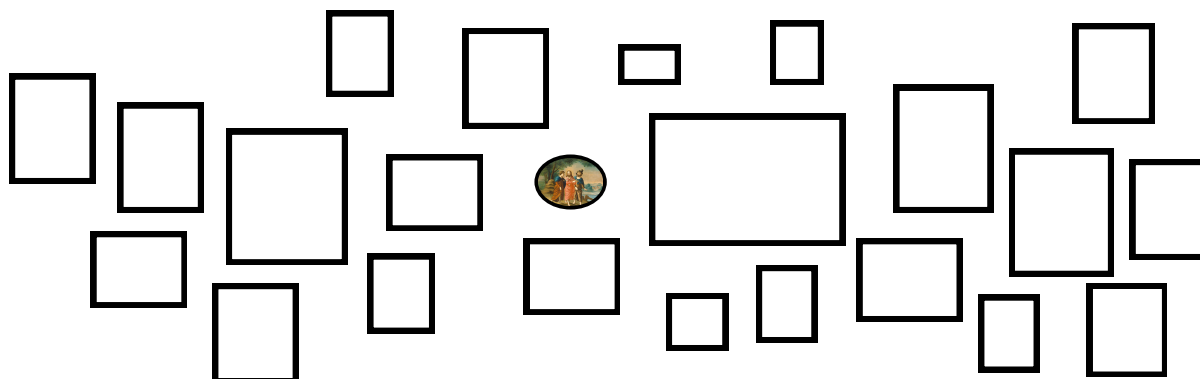
Tithes and offerings may be left in the offering plate. Those who prefer to donate electronically are invited to donate through our church website:



Our congregation has a practice of staying seated for the duration of the postlude.

Our worship does not end with the postlude, but continues out into the world, where we are sent to love and care for God's people.

Our featured image today is "Christ on the Road to Emmaus," from the National Gallery of Art, D.C.



# 303 God the Spirit, Guide and Guardian

Capo 1: (Em) Fm (Bm) Cm (Em) Fm (D) Eb (G) Ab




1 God the Spir - it, guide and guard-ian, wind - sped  
 2 Christ our Sav - ior, sov - ereign, shep-herd, Word made  
 3 Great Cre - a - tor, life - be - stow - er, truth be -  
 4 Tri - une God, mys - ter - ious be - ing, un - di -

(D) Eb (Em) Fm (A) Bb (B7) C7 (Em) Fm (Bm) Cm




flame and hov - ering dove, breath of life and  
 flesh, Love cru - ci - fied, teach - er, heal - er,  
 yond all thought's re - call, fount of wis - dom,  
 vid - ed and di - verse, deep - er than our

(Em) Fm (D) Eb (G) Ab (Am) Bbm (Em) Fm (Bm) Cm (Em) Fm



voice of proph-ets, sign of bless - ing, power of love:  
 suf - fering ser - vant, friend of sin - ners, foe of pride:  
 womb of mer - cy, giv - ing and for - giv - ing all:  
 minds can fath - om, great - er than our creeds re-hearse:

(C) Db (G) Ab (D) Eb



give to those who lead your peo - ple fresh a -  
 in your tend - ing may all \*pas - tors learn and  
 as you know our strength and weak - ness, so may  
 help us in our var - ied call - ings your full

*\*Or "elders" or "deacons"*

*Guitar chords do not correspond with keyboard harmony.*

This text affirms that the church's ministry is the combined witness of all its members. The first half of each stanza addresses either one of the divine Persons or the full Triune God, and the second half forms a prayer drawing on the attributes recalled in the first half.

THE CHURCH

(Am) (Em) (B7) (Em) (Bm)  
 B<sup>b</sup>m Fm C7 Fm Cm

noint - ing of your grace; send them forth as  
 live a shep - herd's care; grant them cour - age  
 those the church ex - alts o - ver - see its  
 im - age to pro - claim, that our min - is -

(Em) (D) (G) (Am) (Em) (Bm) (Em)  
 Fm E<sup>b</sup> A<sup>b</sup> B<sup>b</sup>m Fm Cm Fm

bold a - pos - tles to your church in ev - ery place.  
 and com - pas - sion shown through word and deed and prayer.  
 life stead - fast - ly, yet not o - ver - look its faults.  
 tries u - nit - ing may give glo - ry to your name.

## 450

## Be Thou My Vision

Capo 1: (D) E<sup>b</sup> (G) A<sup>b</sup> (D/F#) E<sup>b</sup>/G (A7) B<sup>b</sup>7 (D) E<sup>b</sup>



1 Be thou my vi - sion, O Lord of my heart;  
 2 Be thou my wis - dom, and thou my true Word;  
 3 Rich - es I heed not, nor vain, emp - ty praise;  
 4 High King of Heav - en, my vic - to - ry won,

(A) B<sup>b</sup> (D) E<sup>b</sup> (G) A<sup>b</sup> (A) B<sup>b</sup>



naught be all else to me, save that thou art;  
 I ev - er with thee and thou with me, Lord;  
 thou mine in - her - i - tance, now and al - ways;  
 may I reach heav - en's joys, O bright heaven's Sun!

(G) A<sup>b</sup> (D) E<sup>b</sup> (F#m7) Gm7 (G) A<sup>b</sup> (A) B<sup>b</sup>



thou my best thought, by day or by night,  
 thou my soul's shel - ter, and thou my high tower;  
 thou and thou on - ly, first in my heart,  
 Heart of my own heart, what - ev - er be - fall,

(Bm) Cm (D/F#) E<sup>b</sup>/G (G) A<sup>b</sup> (D) E<sup>b</sup>



wak - ing or sleep - ing, thy pres - ence my light.  
 raise thou me heaven - ward, O Power of my power.  
 High King of Heav - en, my trea - sure thou art.  
 still be my vi - sion, O Rul - er of all.

*Guitar chords do not correspond with keyboard harmony.*

These stanzas are selected from a 20th-century English poetic version of an Irish monastic prayer dating to the 10th century or before. They are set to an Irish folk melody that has proved popular and easily sung despite its lack of repetition and its wide range.

# 582

## Glory to God, Whose Goodness Shines on Me

Capo 3: (G) (D) (G) (D) (G) (D) (Em) (D)  
 B<sup>b</sup> F B<sup>b</sup> F B<sup>b</sup> F Gm F

1 Glo - ry to God, whose good - ness shines on me,  
 2 World with - out end, 7 with - out end. A - men.

(D) (G) (C) (G) (Em7) (A7)  
 F B<sup>b</sup> E<sup>b</sup> B<sup>b</sup> Gm7 C7

and to the Son, whose grace has par - doned me,  
 World with - out end, 7 with - out end. A - men.

(A7) (D) (F#) (Bm)  
 C7 F A Dm

and to the Spir - it, whose love has set me free.  
 World with - out end, 7 with - out end. A - men.

(Bm7) (D) (Bdim7) (Em7) (Dm)(A7) (D)  
 Dm7 F Ddim7 Gm7 Fm C7 F

As it was in the be - gin - ning, is now and ev - er shall be. A - men.

# God, Be the Love to Search and Keep Me

O Christ, Surround Me



1 God, be the love to search and keep me; God, be the prayer to  
 2 Bind to my-self the Name of Ho - ly, great cloud of wit - ness-  
 3 Bright-ness of sun and glow of moon-light, flash - ing of light-ning,  
 4 Walk - ing be-hind to hem my jour - ney, go - ing a - head to  
 5 Christ in the eyes of all who see me, Christ in the ears that



move my voice; God, be the strength to now up - hold me:  
 es en - fold; proph - ets, a - pos - tles, an - gels wit - ness:  
 strength of wind, depth of the sea to soil of plan - et:  
 light my way, and from be - neath, a - bove, and all ways:  
 hear my voice, Christ in the hearts of all who know me:



O Christ, sur-round me; O Christ, sur-round me.

This hymn is a 21st-century adaptation of the traditional Celtic prayer style known as a *lorica* (Latin for "armor" or "breastplate"). Many such petitions for God's presence and protection were never written down, but this one is based on an example attributed to St. Patrick.



# Prayer Requests

## Healing and Wholeness

Prayers for Nick Van Patten for having ongoing health issues.  
Continued prayers for Joan's granddaughter, Ellen, and for her Aunt Joan.

## Joy and Celebration

Joy for Joanna and her musical talent, and thankful that she shared it with us.  
Happy Birthday to Gabe Mueller on March 17, Janet Kilcullen and Nick Van Patten on March 18, David Henrion on March 19, and Jaime Krob on March 20.

## Announcements

Have a question about an event? An announcement to share? Contact the church office at 314-822-2545 or by e-mail to [glendaleprese@gmail.com](mailto:glendaleprese@gmail.com)

### Rev. Dr. Brandan Eddy

Please welcome this morning Rev. Dr. Brandan Eddy, Stated Clerk of Presbytery. Since being approved for this position in November, Brandan has been worshipping with the many congregations in our presbytery and today he is visiting with GPC. Please make him feel at home.

### Second PC(USA)/GPC "101" Class today after worship!

For those of you interested in joining the church, or just learning more about GPC, and the PC(USA) as a whole, we invite you to attend the second of two Sunday learning sessions. Don't miss this unique learning opportunity. Everyone is welcome!

### Easter Flowers

Today is the last day to place an order for Easter flowers. If paying by check please indicate payment is for Easter flowers on the check.

### Easter Egg Hunt Supplies

We are still collecting packages of individually wrapped candy to fill Easter eggs. (Don't bring eggs - we have plenty!) Please bring your donation to church by Sunday March 24. We will be stuffing the Easter eggs during Fellowship on that day. Thank you!

### Coffee Shop Office Hours

Pastor Kathleen's coffee shop hours this week will be at St. Louis Bread Co in Webster Groves, Wednesday, 3/20 from 1-3 pm.



75  
YEARS



ONE GREAT HOUR OF SHARING

SPECIAL OFFERINGS

HUNGER • DISASTER • DEVELOPMENT

FEBRUARY 14 - MARCH 31, 2024

We will be accepting donations to OGHS this Sunday as well as the next two Sundays.



# Welcome

Welcome to Glendale Presbyterian Church! We are glad to have you join us for worship. If you are new to GPC, it is our prayer that you will experience the presence of God while you are here. At GPC, we share God's love through our work and play in our church and community.

## Children & Worship

Children are always welcome in worship. The "Prayer Ground" is located in the front of the sanctuary where children are welcome to sit as is most comfortable to them and to engage with the materials up there throughout the service. In addition, the nursery is available for use by small children and their grown-ups near the Parking Lot Entry to the church. During the school year, children are invited to attend Sunday School following "Opening the Word with Young Disciples."

## Worship Bags

All ages are invited to pick up a GPC worship bag in the Narthex (back of the sanctuary) that has items to be utilized to enhance their worship experience.

## New Members

New members are received by the Session. If you are seeking a church home, we invite you to join the GPC family. Please contact Pastor Kathleen at 314-944-3334 or [pastorhenrion@gmail.com](mailto:pastorhenrion@gmail.com) for further information.

## Prayer Request Cards

Blue prayer request cards are available upon entry to the building, as well as in pews. Please use them to note any joys or concerns you wish to have lifted in prayer. Place your prayer request card in the basket at either entrance to the Sanctuary before worship begins. If you need to fill it out during the beginning of worship, feel free to drop your prayer requests in the basket during the first hymn. The cards will be shared with the congregation, in worship, on the video of worship, and in the newsletter unless otherwise requested on the card.

## Pastoral Care

To notify the church of illnesses, hospitalizations, or deaths; or to pass along a prayer request; or to arrange for Home Communion, Please contact the church office at 314-822-2545 or by e-mail to [glendalepres@gmail.com](mailto:glendalepres@gmail.com) or you are welcome to contact Kathleen directly via call or text at 314-944-3334. Or by email at [pastorhenrion@gmail.com](mailto:pastorhenrion@gmail.com)

---

## Serving the Church

Interested in serving the church in some way? Contact the church office at 314-822-2545 or by e-mail to [glendalepres@gmail.com](mailto:glendalepres@gmail.com) and we'd love to connect you.

### Sunday, March 17, 2024

**Liturgist** | Leslen Sanders  
**Song Leader** | Peggy Mayfield  
**Usher** | Kathy Foresman  
**Greeter** | Elaine Bidstrup  
**Online Host** | Steve Chamberlin  
**Fellowship** | Niesens  
**Counters** | Peggy Mayfield, Bob Bidstrup  
**Music Director** | Carol Schmidt  
**Pastor** | Rev. Kathleen Henrion

### Sunday, March 24, 2024

**Liturgist** | Gabe Mueller  
**Song Leader** | Tom Barclay  
**Usher** | Jaime Krob  
**Greeter** | Leslie McKinstry  
**Online Host** | Matt Krob  
**Fellowship** | Leslen Sanders  
**Counters** | Peggy Mayfield, Vicki Sorrells  
**Music Director** | Carol Schmidt  
**Pastor** | Rev. Kathleen Henrion



## Glendale Presbyterian Church

500 N. Sappington, Glendale, MO 63122  
314-822-2445 | [glendalepres@gmail.com](mailto:glendalepres@gmail.com) | [glendalepcusa.org](http://glendalepcusa.org)



Glendale Presbyterian Church is a member of the Presbytery of Giddings-Lovejoy ([glpby.org](http://glpby.org)), the Synod of Mid America ([synodma.org](http://synodma.org)), and the Presbyterian Church (USA) ([pcusa.org](http://pcusa.org)). We are members of the Covenant Network, which is working toward a fully inclusive church.