

# Glendale Presbyterian Church

January 14, 2024 | 10 AM  
Second Sunday in Ordinary Time



## Gather

Welcome & Announcements | Rev. Kathleen Henrion

Prelude | When Thou Art Near, J.S. Bach | Carol Schmidt

\*Call to Worship | Liturgist

One: In the silence of a lonely night,  
in the songs children sing in the morning,  
God calls to us.

**All: We are here, God who is always with us,  
listening for your words of life and love.**

One: When we would decide to go it alone,  
when we think no good can be found anywhere,  
Jesus calls to us.

**All: We are here, Friend who knows our longings,  
ready to come and see where you would lead us.**

One: When we think we have license to do whatever we want,  
when we are convinced we need no map,  
the Spirit calls to us.

**All: We are here, Peace we are longing for,  
so that we might help others find the way to life.**

\*Hymn | Congregational Choice

Call to Confession | Liturgist

Prayer of Confession

**Because we are so focused on ourselves, God of every life, it is hard to see the lives which others endure. When we are so worried about how the economy will affect us, we do not notice those in need around us. As we grumble about our aches and pains, and about how difficult it is to get out of the bed each day, we easily ignore the broken.**

**Forgive us, God of goodness and grace. Speak to us of healing, so we might bring help to others. Speak to us of grace, so hearing, we may share it with everyone we meet. Speak to us of love and life, so we may offer it as freely as Jesus Christ, our Lord and Savior, brought it to us.**

Assurance of Forgiveness

One: Come and see! God's grace is poured out on everyone, God's hope is freely shared in every moment, forgiveness is the gift which mends our lives.

**All: Thanks be to God. We are surrounded by God's love and mercy, now and to the very end! Amen.**

\*Passing of the Peace

One: The peace of Christ be with you.

**All: And also with you.**

Anthem | Festive Praise, Allen Pote | Chancel Choir

Reformed worship is centered around the Word, both the Word of scripture and Christ as the Word Incarnate. In worship we gather around the Word, engage with the Word, and respond to the Word.

**Bold text is read by the congregation.**

\*Please rise in body or in spirit.

You may access the online order of worship to follow along on any digital device:



In the presence of a holy God, we become aware of the ways we fall short of God's best hopes for us, and the ways we have hurt others. We turn to God in prayer, asking for forgiveness.

Passing of the Peace is one of the most ancient responses in worship. We invite you to share a sign of peace with your neighbor.

# Proclaim God's Word

Prayer for Illumination | Liturgist

+Opening the Word with Young Disciples | Rev. Kathleen Henrion

Hymn | GTG #455 | Listen to the Word that God Has Spoken

Scripture | Psalm 139:1-6, 13-18 and John 1:43-51

Sermon | "Known" | Rev. Kathleen Henrion

# Respond to God's Word

\* Hymn | GTG #302 | When Hands Reach Out and Fingers Trace

Affirmation of Faith | The Apostles' Creed

**I believe in God the Father Almighty, Maker of heaven and earth, and in Jesus Christ his only Son our Lord; who was conceived by the Holy Ghost, born of the Virgin Mary, suffered under Pontius Pilate, was crucified, dead, and buried; he descended into hell; the third day he rose again from the dead; he ascended into heaven, and sitteth on the right hand of God the Father Almighty; from thence he shall come to judge the quick and the dead. I believe in the Holy Ghost; the holy catholic church; the communion of saints; the forgiveness of sins; the resurrection of the body; and the life everlasting. Amen.**

Words of Offering | Liturgist

\*Doxology | GTG #582 | Glory to God, Whose Goodness Shines on Me

Prayers of the People

Lord's Prayer

**Our Father, who art in heaven, hallowed be thy name. Thy kingdom come. Thy will be done on earth as it is in heaven. Give us this day our daily bread. And forgive us our debts as we forgive our debtors. And lead us not into temptation. But deliver us from evil. For Thine is the Kingdom, and the power and the glory forever. Amen.**

\*Hymn | GTG #547 | Go, My Children, with My Blessing

\*Blessing and Benediction | Rev. Kathleen Henrion

Postlude | Prelude in C Major for Organ J.S. Bach | Carol Schmidt

*Some Liturgies come from Thom M. Shuman's Lectionary Liturgies:  
<http://lectionaryliturgies.blogspot.com/>*

+ At this time children are invited to come forward to the front pew for conversation around our texts for the week

Following "Opening the Word with Young Disciples" children are invited to join our Sunday School Teacher in the back of the sanctuary to go to Sunday School downstairs.

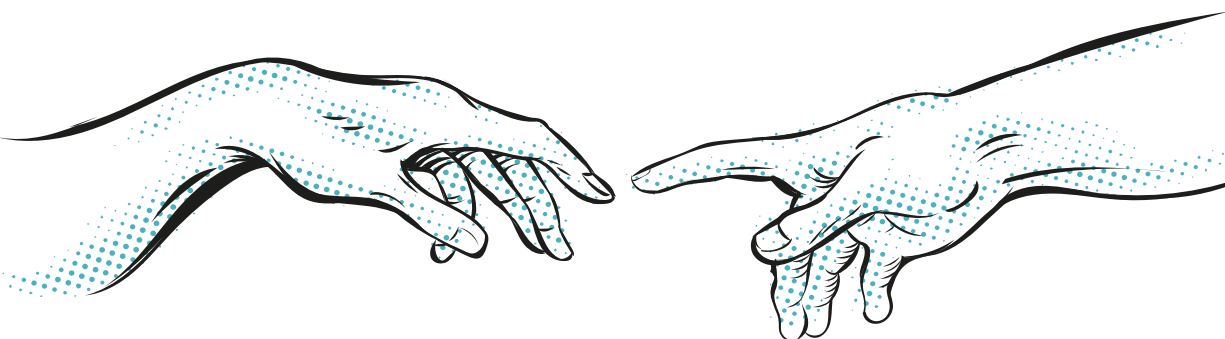
The Apostles' Creeds from the ancient church comes as close as any other confessional statements to expressing the faith of all Christians, of all traditions, throughout church history.

Tithes and offerings may be left in the offering plate. Those who prefer to donate electronically are invited to donate through our church website:



Our congregation has a practice of staying seated for the duration of the postlude.

Our worship does not end with the postlude, but continues out into the world, where we are sent to love and care for God's people.



# 455 Listen to the Word That God Has Spoken

The image shows three staves of musical notation in 4/4 time, key of B-flat major. The melody consists of quarter and eighth notes. The lyrics are: Lis-ten to the word that God has spo-ken; lis-ten to the One who is close at hand; lis-ten to the voice that be-gan cre - a - tion; lis-ten e-ven if you don't un - der-stand.

*May be sung as a round, successive voices entering ad lib.*

Like "Open Your Ears, O Faithful People" (see no. 453), this short song from Canada is an encouragement to pay attention to what God is saying. The significance of the text is enhanced by singing this piece as a round, allowing the overlapping phrases to yield a single message.

TEXT: Anon. Canadian, alt.  
MUSIC: Anon. Canadian; adapt. *Church Hymnary, 4th Edition, 2005*

LISTEN  
10.10.11.10

# When Hands Reach Out and 302 Fingers Trace



1 When hands reach out and fin - gers trace the beau - ty  
 2 When fin - gers spell and signs ex - press our prayer and  
 3 When bro - ken bod - ies will not mend, we thank you,  
 4 And when the ways we learn and grow are not the  
 5 Your Spir - it gives us dif - fer - ing ways to serve you



of a loved one's face, we thank you, God, that  
 praise and thank - ful - ness, we thank you, God, that  
 God, for Christ our friend. In him, our heal - ing  
 ways that oth - ers know, we thank you, God, that  
 well and of - fer praise. When all are joined as



love re - lies on gifts of grace not seen with eyes.  
 hands can sing; you bless the si - lent songs we bring.  
 can be - gin: he wel - comes all the wound - ed in.  
 we have learned your love's a gift, and nev - er earned.  
 one, we'll be your a - ble, strong com - mu - ni - ty.

*Guitar chords do not correspond with keyboard harmony.*

This hymn celebrates the breadth of human diversity and the variety of gifts and abilities through which God's people serve the church and world. Incorporating such diversity provides a vital witness to the hospitality of Christian community and to the inclusive nature of love.

# 582

## Glory to God, Whose Goodness Shines on Me

Capo 3: (G) (D) (G) (D) (G) (D) (Em) (D)  
 B<sup>b</sup> F B<sup>b</sup> F B<sup>b</sup> F Gm F

1 Glo - ry to God, whose good - ness shines on me,  
 2 World with - out end, with - out end. A - men.

(D) (G) (C) (G) (Em7) (A7)  
 F B<sup>b</sup> E<sup>b</sup> B<sup>b</sup> Gm7 C7

and to the Son, whose grace has par - doned me,  
 World with - out end, with - out end. A - men.

(A7) (D) (F#) (Bm)  
 C7 F A Dm

and to the Spir - it, whose love has set me free.  
 World with - out end, with - out end. A - men.

(Bm7) (D) (Bdim7) (Em7) (Dm)(A7) (D)  
 Dm7 F Ddim7 Gm7 Fm C7 F

As it was in the be - gin - ning, is now and ev - er shall be. A - men.

# Go, My Children, with My Blessing 547



1 "Go, my chil-dren, with my bless-ing, nev-er a-lone.  
 2 "Go, my chil-dren, sins for-giv-en, at peace and pure.  
 3 "Go, my chil-dren, fed and nour-ished, clos-er to me.



Wak-ing, sleep-ing, I am with you, you are my own.  
 Here you learned how much I love you, what I can cure.  
 Grow in love and love by serv-ing, joy-ful and free.



In my love's bap-tis-mal riv-er I have made you mine for-  
 Here you heard my dear Son's sto-ry; here you touched him, saw his  
 Here my Spir-it's pow-er filled you; here my ten-der com-fort



ev-er. Go, my chil-dren, with my bless-ing, you are my own."  
 glo-ry. Go, my chil-dren, sins for-giv-en, at peace and pure."  
 stilled you. Go, my chil-dren, fed and nour-ished, joy-ful and free."

Because this Welsh melody usually sets evening texts, the author was asked to create one for use in daytime. His recasting of the Aaronic blessing in Numbers 6:22–27 imagines that passage as a benediction that might be spoken by God at the conclusion of a worship service.

# Prayer Requests

## Healing and Wholeness

Prayers for Jere Dorough, Leslie's dad, as he continues to recover from pacemaker surgery.

Prayers for Mary Beth Garasky's sister, Jane, who has been ill.

Prayers for the family of Kersten Johnson, former classmate of Paige Stroud, who passed away.

Prayers for Randy's brother, Buddy, who is stopping cancer treatments and entering hospice care.

Continued prayers for Joan's granddaughter, Ellen, and for her Aunt Joan.

---

## Announcements

Have a question about an event? An announcement to share? Contact the church office at 314-822-2545 or by e-mail to [glendalepres@gmail.com](mailto:glendalepres@gmail.com)

### Presbyterian Women

Our next meeting is Tuesday, January 16, 9:30 a.m. in Room 208. Please join us!

### Celebrate Caroline Krob's Confirmation!

First, Join us on **January 28th** at 9 a.m. at First Presbyterian Kirkwood to see Caroline Krob lead worship with her confirmation class. Then, come to GPC for regular worship at 10 a.m. All are invited to attend both. FPCK is aware that we will be leaving their service early for our 10:00 worship here.

Finally, Caroline will be confirmed and join our church as a new member on **Sunday, Feb. 11th**, be sure to attend to give her our support as she takes this exciting step!

### Coming Soon: Lent!

The sermon series for Lent is all about Jesus, with the theme "Who Do You Say That I Am?" Liturgical Arts is collecting images of Jesus, as well as picture frames for a Lenten art installation. We're interested in images you already have, or if you are so inclined, images you create! Items should be placed on the table in the small conference room (206) no later than January 28th. Please be sure to put your name on the back of any items you would like returned after Lent. While we hope to include as many items as possible, depending on what we receive we might need to curate what is displayed.

**Please join us for our Ash Wednesday service, February 14th at 7 p.m.**

### Save the Date

Monday, Feb. 19, 6:30 p.m.

Special concert at GPC. More details to come!

### Committees

As we start a new year with a new Session, we invite anyone interested in serving as a new committee member to reach out to the corresponding committee chairs below.

#### Administration

(Building and Grounds, Stewardship, Personnel)  
Leslen Sanders, [leslen.sanders@gmail.com](mailto:leslen.sanders@gmail.com)

#### Care (Member Support and Fellowship)

Leslie McKinstry, [queen.of.books@gmail.com](mailto:queen.of.books@gmail.com)

#### Connect (Worship and Outreach)

Deborah Rose, [roseydeb519@gmail.com](mailto:roseydeb519@gmail.com)  
Sonia Kesslering,  
[smjfkesslering\\_25@yahoo.com](mailto:smjfkesslering_25@yahoo.com)

#### Discipleship (Education and Mission)

Matt Krob, [matt.krob@slu.edu](mailto:matt.krob@slu.edu)

#### Nominating

Beth Ford, [fordbeth75@gmail.com](mailto:fordbeth75@gmail.com)

### Fellowship

Do you enjoy snacking and chatting? Do you have a favorite treat that you like to share? If so, please consider signing up to bring refreshments for fellowship time after Sunday worship. Anything is welcome - snacks do not have to be homemade. A sign-up sheet is available outside the church office. Thank you for your participation!

### Coffee Shop Office Hours

Pastor Kathleen's coffee shop hours this week will be at St. Louis Bread Co in Webster Groves, Wednesday 1-3 pm.

# Welcome

Welcome to Glendale Presbyterian Church! We are glad to have you join us for worship. If you are new to GPC, it is our prayer that you will experience the presence of God while you are here. At GPC, we share God's love through our work and play in our church and community.

## Children & Worship

Children are always welcome in worship. The "Prayer Ground" is located in the front of the sanctuary where children are welcome to sit as is most comfortable to them and to engage with the materials up there throughout the service. In addition, the nursery is available for use by small children and their grown-ups near the Parking Lot Entry to the church. During the school year, children are invited to attend Sunday School following "Opening the Word with Young Disciples."

## Worship Bags

All ages are invited to pick up a GPC worship bag in the Narthex (back of the sanctuary) that has items to be utilized to enhance their worship experience.

## New Members

New members are received by the Session. If you are seeking a church home, we invite you to join the GPC family. Please contact Pastor Kathleen at 314-944-3334 or [pastorhenrion@gmail.com](mailto:pastorhenrion@gmail.com) for further information.

## Prayer Request Cards

Blue prayer request cards are available upon entry to the building, as well as in pews. Please use them to note any joys or concerns you wish to have lifted in prayer. Place your prayer request card in the basket at either entrance to the Sanctuary before worship begins. If you need to fill it out during the beginning of worship, feel free to drop your prayer requests in the basket during the first hymn. The cards will be shared with the congregation, in worship, on the video of worship, and in the newsletter unless otherwise requested on the card.

## Pastoral Care

To notify the church of illnesses, hospitalizations, or deaths; or to pass along a prayer request; or to arrange for Home Communion, Please contact the church office at 314-822-2545 or by e-mail to [glendalepres@gmail.com](mailto:glendalepres@gmail.com) or you are welcome to contact Kathleen directly via call or text at 314-944-3334. Or by email at [pastorhenrion@gmail.com](mailto:pastorhenrion@gmail.com)

---

## Serving the Church

Interested in serving the church in some way? Contact the church office at 314-822-2545 or by e-mail to [glendalepres@gmail.com](mailto:glendalepres@gmail.com) and we'd love to connect you.

### Sunday, January 14, 2024

**Liturgist** | Leslen Sanders  
**Song Leader** | Katie Niesen Cook  
**Usher** | Elaine Bidstrup  
**Greeter** | Caroline Chamberlin  
**Online Host** | Matt Krob  
**Sunday School** | Gabe Mueller  
**Fellowship** | Bidstrups  
**Counters** | Vicki Sorrells, Peggy Mayfield  
**Music Director** | Carol Schmidt  
**Pastor** | Rev. Kathleen Henrion

### Sunday, January 21, 2024

**Liturgist** | Beth Ford  
**Song Leader** | Debbie Rose  
**Usher** | Leslen Sanders  
**Greeter** | Jaime Krob  
**Online Host** | Sonia Kesselring  
**Sunday School** | Chamberlins  
**Fellowship** | Chamberlins  
**Counters** | Vicki Sorrells, Terry Ulmer  
**Music Director** | Carol Schmidt  
**Pastor** | Rev. Kathleen Henrion



## Glendale Presbyterian Church

500 N. Sappington, Glendale, MO 63122  
314-822-2445 | [glendalepres@gmail.com](mailto:glendalepres@gmail.com) | [glendalepcusa.org](http://glendalepcusa.org)



Glendale Presbyterian Church is a member of the Presbytery of Giddings-Lovejoy ([glpby.org](http://glpby.org)), the Synod of Mid America ([synodma.org](http://synodma.org)), and the Presbyterian Church (USA) ([pcusa.org](http://pcusa.org)). We are members of the Covenant Network, which is working toward a fully inclusive church.